



Residence Brehova

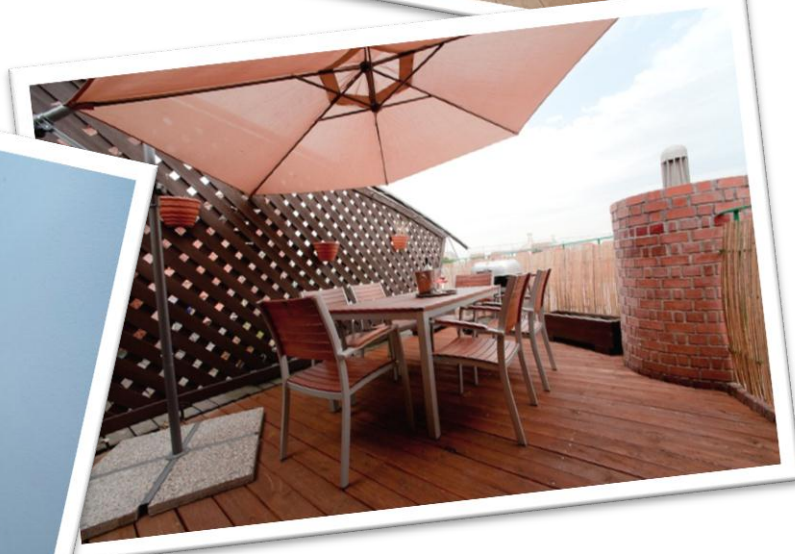
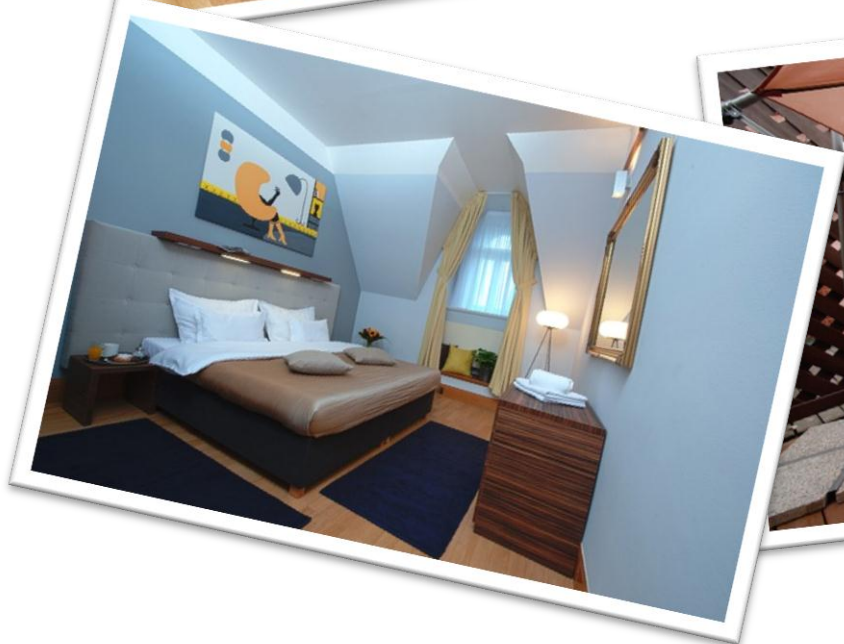


Apartment n.52 (222 m²)

Floor: 5th

Address: Brehova 8, Prague, 110 00

This loft apartment has over 220 m² and outstanding views to Prague Castle. Two comfortable bedrooms with additional bedroom on gallery offer a lot of comfort for six people. Huge living/lounge area has dining area for eight people, two sofas, two bathrooms and fireplace. On the gallery you can find work desk, lounge area for reading and small kitchen corner. On the top of that apartment has terrace for relax with barbecue grill.



APARTMENT FACILITIES

- Sat-TV
- radio
- Hi-Fi
- balcony/terrace
- non smoking rooms
- ironing facilities
- toaster
- microwave oven
- coffee maker
- kettle
- oven
- safe box
- hairdryer
- bathroom (shower)/WC
- fully equipped kitchen
- dish-washer
- fridge
- bed linen and towels incl.
- kitchen available
- internet connection
- work-space
- double bed/twin bed
- extra-bed available
- washing machine with dryer
- computer connection
- electric stove
- gas stove
- make-up mirror
- DVD player
- complimentary toiletries
- LCD TV
- WI-FI internet

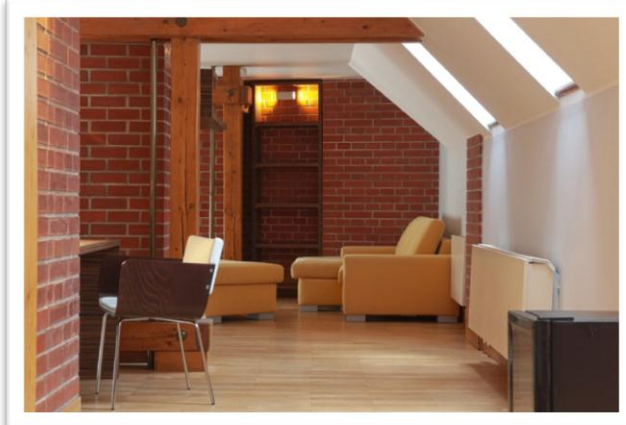
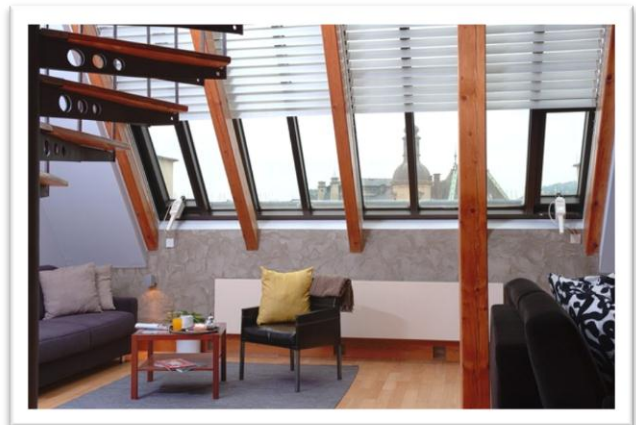
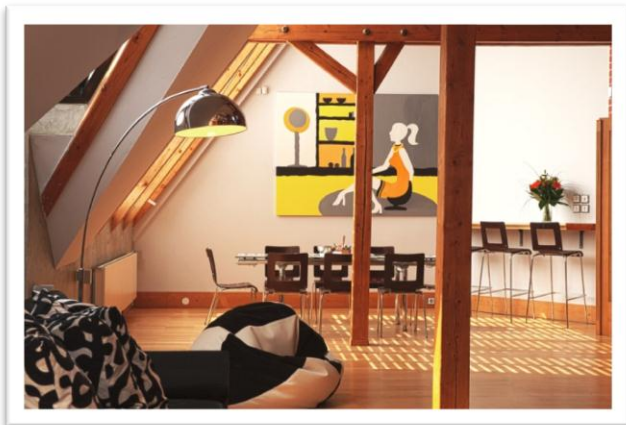
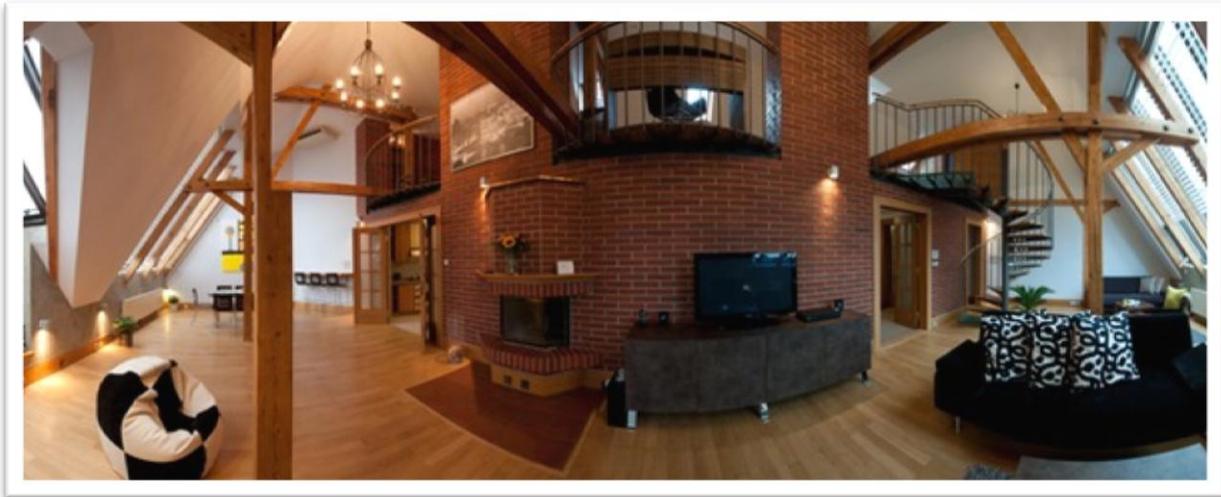
Apartment n.52 floorplan



Prague City Apartments, Divadelni 24, Prague 1 – Old Town, Czech Republic

Tel.: +420 224 990 990, Fax: +420 224 990 999

e-mail: reservations@prague-city-apartments.cz, web: <http://www.prague-city-apartments.cz>



Prague City Apartments, Divadelni 24, Prague 1 – Old Town, Czech Republic

Tel.: +420 224 990 990, Fax: +420 224 990 999

e-mail: reservations@prague-city-apartments.cz, web: <http://www.prague-city-apartments.cz>